



■ Features

- ROHS Compliant
- High power rating
- High rejection

■ Electrical Specifications

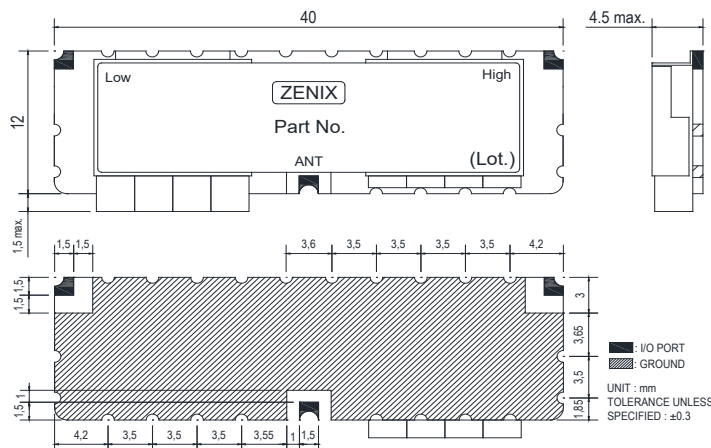
Parameter	Port	Frequency (MHz)	Min.	Typ.	Max.	Unit
Center frequency	Low	1812.5	-	1812.5	-	MHz
	High	2592.5	-	2592.5	-	MHz
Bandwidth	Low	235	1695	-	1930	MHz
	High	225	2480	-	2705	MHz
Insertion Loss	Low	1695 ~ 1930	-	1.3	2.0	dB
	High	2480 ~ 2705	-	1.3	2.0	dB
Ripple	Low	1695 ~ 1930	-	0.4	0.5	dB
	High	2480 ~ 2705	-	0.4	0.5	dB
Return Loss	Low	1695 ~ 1930	15	17	-	dB
	High	2480 ~ 2705	15	17	-	dB
Attenuation	Low	2480 ~ 2705	45	50	-	dB
	High	1695 ~ 1930	45	60	-	dB

■ Maximum Ratings

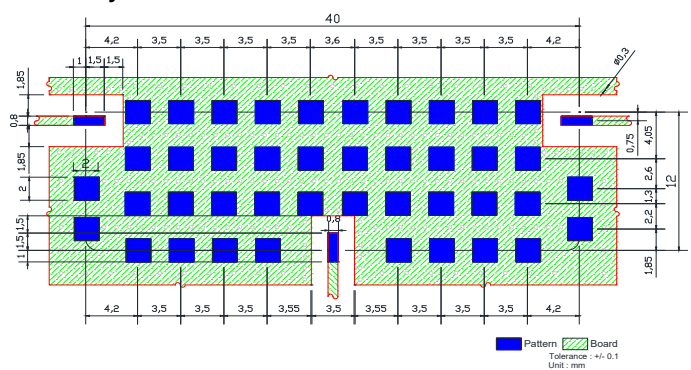
Input Power Handling	3Watt max.
Operating Temperature	-30°C to 70°C
Storage Temperature	-40°C to 95°C

• Permanent damage may occur if any of these limits are exceeded.

■ Dimension

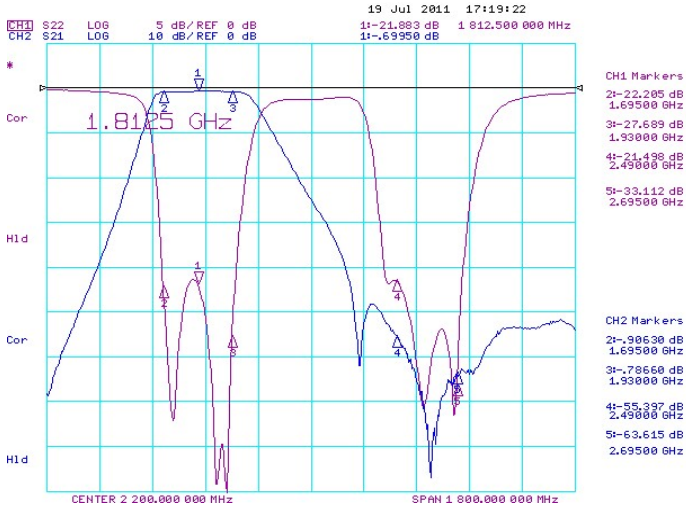


■ PCB Layout



Typical Performance Data at 25°C

- Low ⇒ Insertion Loss, Ripple, Return Loss, Attenuation



- High ⇒ Insertion Loss, Ripple, Return Loss, Attenuation

